



**Metcalfe Mtungwazi**  
062 676 2638  
metcalfe.mtungwazi@archonint.com

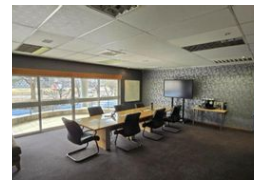
Contact Archon International  
Properties Johannesburg

011 568 4341

Ground Floor  
The Place  
1 Sandton Drive  
Sandton  
2196



Web Ref CL229



R75 per m<sup>2</sup>

**Gross Monthly Rental** R715,329 Excl. VAT



### Logistics Facility to Let in Pomona

Welcome to 23 Pomona Road, a prime industrial property boasting a total gross lettable area of 9,537.72sqm. This facility includes a spacious 6,229.23sqm warehouse, 269.05sqm of office and ablution space, a 274.04sqm truck wash bay, 395.40sqm of change rooms within the warehouse, and 801.66sqm of canopies. The office area is fully fitted, featuring kitchenettes, a dedicated canteen, a combination of open-plan and private offices, and two boardrooms.

The warehouse is designed for efficiency, equipped with 13 roller doors (1 at grade level and 12 with dock levellers), a 10-meter eave height, and three-phase power. The property is competitively priced at R75.00 per square meter on a Triple Net Lease basis, with availability for occupation from 1 December 2024.

### Features

**Zoning** Industrial

#### Sizes

Floor Size 9,537m<sup>2</sup>