


Metcalfe Mtungwazi

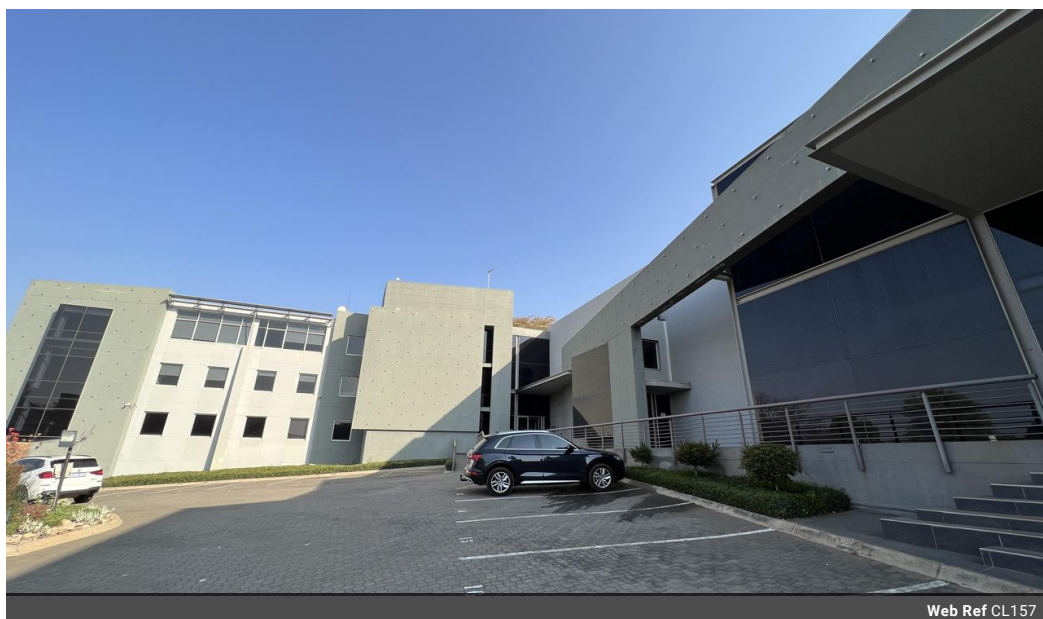
062 676 2638

metcalfe.mtungwazi@archonint.com

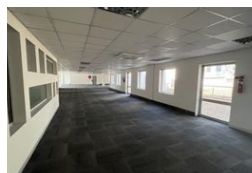
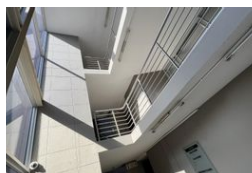
Contact Archon International
Properties Johannesburg

011 568 4341

Ground Floor
The Place
1 Sandton Drive
Sandton
2196



Web Ref CL157


R100 per m²
Gross Monthly Rental R148,255 Excl. VAT

 32  18

A-Grade office to let in Bryanston, Sandton

Discover the epitome of corporate excellence with this A-Grade stand-alone office building available for lease in the prestigious Bryanston district of Sandton. A portion of this remarkable building, measuring 1,482 square meters, is now open for lease, offering a premium workspace for your business operations.

Key Property Highlights:

Generous Parking: Enjoy the convenience of ample on-site parking, including basement parking, ensuring that both your team and visitors have easy access to secure parking facilities.

Prime Location: Nestled in the heart of Bryanston, Sandton, this property offers exceptional accessibility. It's strategically positioned to provide quick and convenient access to major transportation routes, making connectivity with the broader business community effortless.

Features

Zoning Commercial

Interior

Air Conditioning	Yes
Power 3 Phase	Yes

Exterior

Security	Yes
Basement Parkings	32
Open Parking Bays	18

Sizes

Floor Size	1,482m ²
------------	---------------------

