



Metcalfe Mtungwazi
062 676 2638
metcalfe.mtungwazi@archonint.com

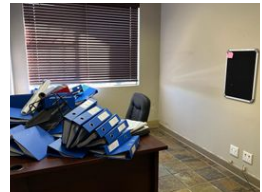
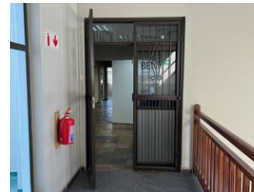
Contact Archon International
Properties Johannesburg

011 568 4341

Ground Floor
The Place
1 Sandton Drive
Sandton
2196



Web Ref CL126



R100 per m²

Gross Monthly Rental R28,000 Excl. VAT

0 0

Office Space to let in Weltevreden Park

This office is located in a secure office park called Gables Office Estate and offers the following:

- BACKUP GENERATOR - PRO-RATA SHARE OF DIESEL
- 24 HOUR SECURITY
- 2 X TOILETS
- 6 ENCLOSED OFFICES
- BOARDROOM
- STORAGE
- RECEPTION

OPTION TO BUY/LEASE SOME OF THE FURNITURE AND OR PRINTER

Features

Zoning Commercial

Interior

Air Conditioning Yes
Power 3 Phase Yes

Exterior

Security Yes
Parking Ratio 4 bays / 100 m²

Sizes

Floor Size 280m²

