



Lesego Lekoba
0648597107
lesego.lekoba@archonint.com



Confidence Maluleke
0115684341

confidence.maluleke@archonint.com

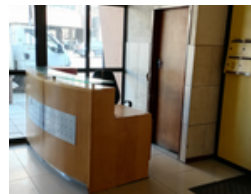
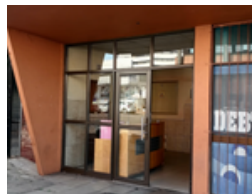
Contact Archon International
Properties Johannesburg

011 568 4341

Ground Floor
The Place
1 Sandton Drive
Sandton
2196

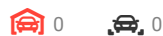


Web Ref CL261



R85 per m²

Gross Monthly Rental R21,000 Excl. VAT



Spacious 213 sqm Office Space to Let in Arcadia, Pretoria

Ideal for established businesses looking for a move-in-ready workspace, this 213 sqm office suite in the heart of Arcadia offers a functional and professional layout designed to support productivity and client interaction.

Key Features:

6 Private Offices - Perfect for managers, teams, or individual workspaces

Reception Area - Welcoming entrance space for clients and visitors

Boardroom - Well-sized for meetings, presentations, and team collaboration

Storage Room - Secure and convenient for files, equipment, or supplies

Air-conditioning & Good Lighting - Creating a comfortable work environment

Secure Premises - Access control and parking available

Located close to major routes, public transport, and nearby amenities, this office offers both visibility and convenience for your

Features

Zoning Commercial

Sizes

Floor Size 213m²