



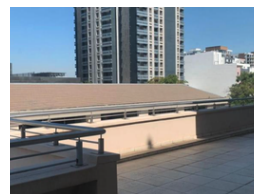
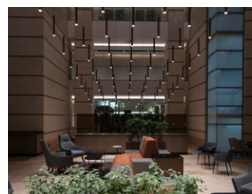
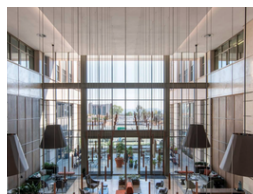
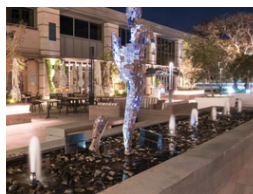
Metcalfe Mtungwazi
062 676 2638
metcalfe.mtungwazi@archonint.com

Contact Archon International
Properties Johannesburg

011 568 4341

Ground Floor
The Place
1 Sandton Drive
Sandton
2196

487m² Office To Let in Rosebank



R190 per m²

Gross Monthly Rental R92,530 Excl. VAT

0 0

THE FIRS, 1 BIERMANN AVENUE ROSEBANK

487sqm to 968sqm units of prime office space available in this PRISTINE BUILDING in middle of the bustling CBD of Rosebank.

Offering white-boxed office options. This property is ideally situated and easily accessible from the Oxford main road. Various amenities such as the Gautrain Station and Rosebank are nearby.

The 487sqm to 968sqm units are white-boxed and can be fit out to the prospective tenant's specifications. Great natural light flows

Features

Building Name	THE FIRS
Zoning	Commercial
Sizes	
Floor Size	487m ²

